

Specs:

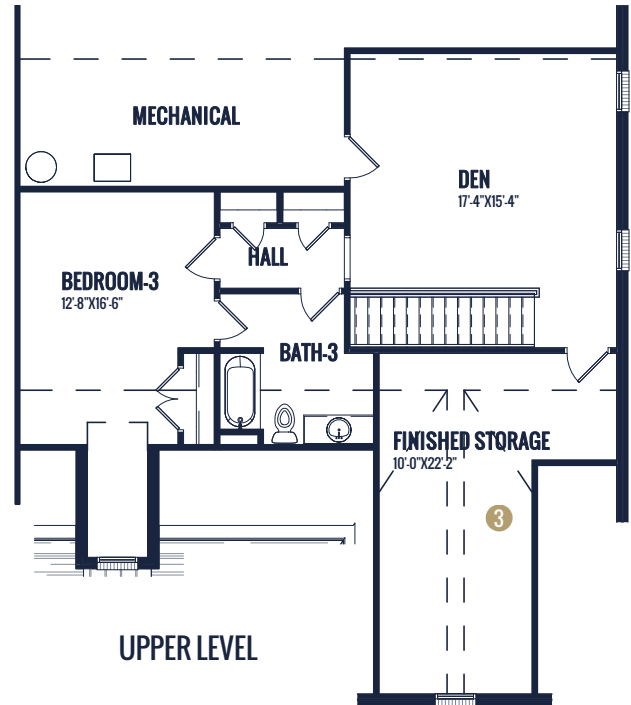
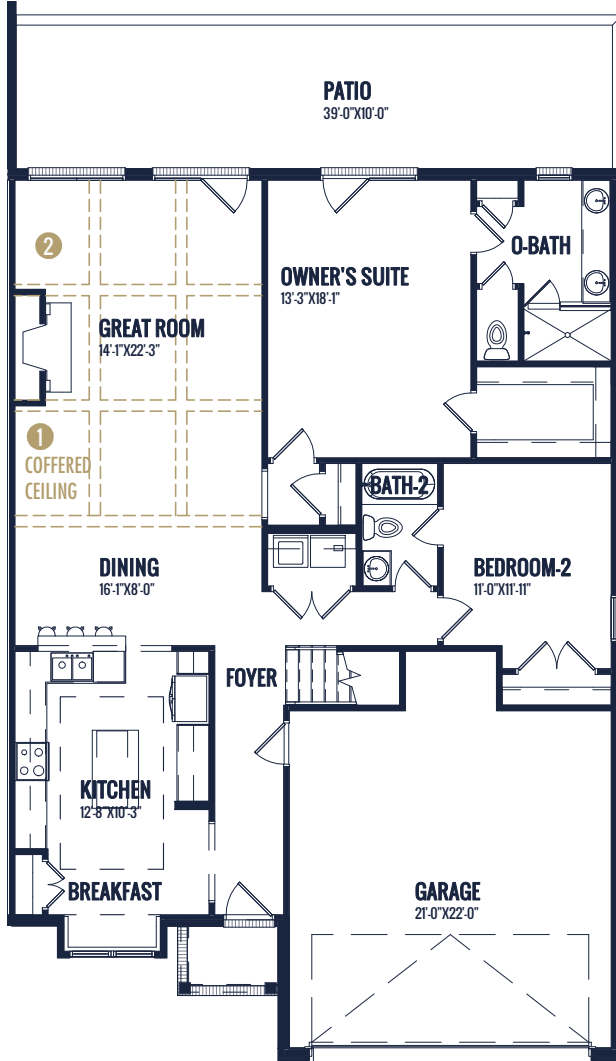
Bedrooms:	3-4
Bathrooms:	3
Square Footage:	2,753 Sq.Ft.
First Level:	1,680 Sq.Ft.
Second Level:	1,073 Sq.Ft.
Width	40'-0"
Depth:	58'-0"

Options Shown:

- ① Coffered Ceiling
- ② Built-ins
- ③ Bedroom 4
- ④ Kitchen Layout "B"

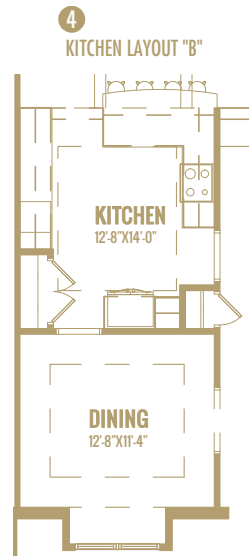
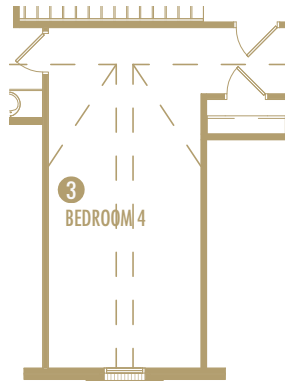
Watercolors, illustrations, and floor plans are for marketing purposes only and are subject to change at builder's discretion. Square footage is outside veneer and should be independently verified. This is not a legal document.
4/12/2019 5:39:46 PM

FLOOR PLAN: HALIFAX



MAIN LEVEL

UPPER LEVEL



Watercolors, illustrations, and floor plans are for marketing purposes only and are subject to change at builder's discretion. Square footage is outside veneer and should be independently verified. This is not a legal document. 4/12/2019 5:39:47 PM